

Unlocking the Power of Image Exchange for Healthcare Professionals

CRISP DC's Image Exchange & Imaging Worklist is your gateway to seamless image collaboration and informed clinical decision-making. Empowering **physicians, physician assistants, and ED physicians**, this innovative tool revolutionizes the way you access and interpret medical images.

CAPABILITIES & ADVANTAGES:

Comprehensive Imaging Support:

From routine X-rays to complex Cardiac Angio studies, Image Exchange accommodates diverse imaging needs with ease. The Image Exchange tool supports Radiology and Cardiology imaging modalities, including X-Rays, CT scans, MRI, Ultrasound, PET-CT, and Cardiac Angio.

Real-Time Image Access:

Say goodbye to delays caused by image processing or scanning, ensuring timely patient care delivery. Instantly access wet (unread) images from partnering healthcare providers in the District directly through the HIE Portal: <https://idp.crisphealth.org>.

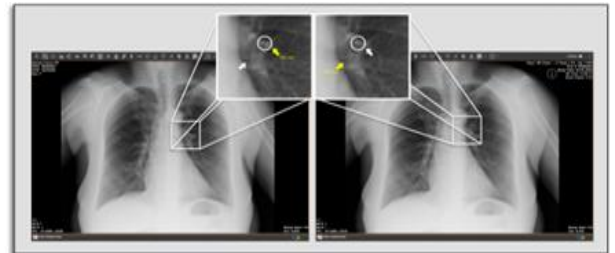
Time and Resource Savings:

Save valuable time and resources, enabling you to focus on patient care priorities. The tool helps to streamline workflow by reducing the need for additional scanning or image processing.

REAL-TIME IMAGE COLLABORATION:

Enhanced Collaboration:

Facilitates real-time consultation with caregivers anywhere within your HIE community. Seamlessly share images and insights with colleagues or patient care teams with a single click. Experience fluid image review and interaction, fostering collaborative decision-making.



Seamless Connectivity:

Connect with colleagues or patient care teams instantly, irrespective of geographical barriers, to collaborate on patient cases in real time by gaining full access to image manipulation tools.

User Story SPOTLIGHT:

“I had a patient appointment following up from a mid-July visit to discuss a referral to pain management for her chronic lower back pain. She had seen pain management, and he had ordered an MRI. She had brought the disc because she wanted me to see it. She is supposed to get an epidural injection today. There were no reports in the chart and the MA was too busy to go and pull the report. I took the plunge and logged in and pulled up the image. I really did not know how to navigate, and the image was challenging to see. But I pulled up a Google image first that showed clearer anatomy of a normal MRI of the lumbar spine and then I clicked over to the image of her spine in CRISP and showed her the disc bulge.” Dr. Eric Marshall.

Questions or Need Support?

The CRISP DC Image Exchange and Imaging Worklist can be accessed through the CRISP DC Portal: <https://idp.crisphealth.org>. For additional information and training, please contact us at dcoutreach@crisphealth.org.